



A 100% EMPLOYEE-OWNED COMPANY.

reinforcing materials & headbands





Reinforcing Materials: Functional, Reliable, Durable

LBS understands the importance of reinforcing materials in the binding process. All of our materials are engineered for superior runnability on all types of binding equipment. LBS' unique, distinctive reinforcing materials support rounded and backed, square back, adhesive or sewn, and most any other binding styles.

NEW FEATURE! LBS has the ability to mark the head or foot of your slit capping materials with a line of color. This reduces orientation issues when feeding book blocks into your casing-in machine. To learn more, contact LBS at 800.247.5323.



Non-Woven Reinforcing Materials

70/110Z   

This crepe paper has the greatest elongation of any stretch paper in the industry. It creates a beautiful, well-rounded back, helps eliminate splitting, and reinforces the spine from head to tail. It runs easily, forming a strong bond to the book block with PUR, cold glue, or hot melt adhesive. Extend the material 5/8" onto the sides of your book block for maximum strength and durability.

- Elongation: 46.2%

LRCM 

Our Latex Reinforced Capping Material (LRCM) is an excellent choice when applied on your perfect binder as a backlining material. This lightly saturated paper offers a combination of strength and elongation in both machine and cross direction.

- 5.5 mil base

HSBP  

This sturdy capping paper is manufactured with long virgin kraft fibers for exceptional body and strength.

- Caliper: .007"

60# WHITE CREPE KRAFT   

An excellent choice when applied on your perfect binder as a backlining material. Because it is white, it will not show through lightweight endpapers.

- Elongation: 6.8%

BP280 - 40# WHITE CREPE KRAFT    

BP280 is our 40# bleached-white, creped kraft backlining material. It can also be used as a headband carrier.

Woven Reinforcing Materials

CAMBRIC^{1,2}

This strong, pliable material is perfect for all reinforced endpapers and spine reinforcement. Our exclusive combination of stiffeners allows the tape to feed and cut easily. Also, LBS Cambric tape is double backfilled to eliminate adhesive squeeze-through.

Turned-Edge Soft Cover Liner: In addition to reinforcing the spine of books, our Cambric is also an excellent material for the lining of turned-edge soft cover books. Specifically designed to run on modern high-speed casemakers, this material gives you a warp-resistant cover with exceptional strength and flexibility.

- 100% Cotton
- Thread Count: 68x68

COTTON SPECIFICATION^{1,2}

Designed for use on square back books, this thin, strong material provides a tight, smooth hinge. The cotton fibers form a strong bond to the spine, creating a sturdy book block.

- Elongation: 26.2%
- 100% Cotton
- Thread Count: 68x68

GS5L

An innovative solution engineered to replace Super and capping paper with a single material and workstation while reinforcing the book block from head to tail. The crepe layer allows the spine to be rounded and backed after application. This material has been patented by our partner company, Dr. Günther Kast GmbH & Co.

- Elongation: 25.7%
- 100% Cotton
- Thread Count: 46x25
- 328 yards/roll

GP5W

Like GP2R, GP5W combines paper and an open-weave fabric. The fabric reinforces the book block and the paper caps the spine, combining a two-step process into one. Because this material is extremely strong, it is recommended for use on book blocks larger than 1.5" thick. It also reinforces the spine from head to tail and can be applied prior to rounding and backing, creating a very sturdy book block.

- Elongation: 14.5%
- 100% Cotton
- Thread Count: 36x64
- 500 yards/roll

GP2R

This unique material combines capping paper and a Super-like fabric that reinforces the book block from head to tail while capping the spine. This combination saves you money through the elimination of a workstation and reduction of inventory. Recommended for book blocks less than 1.5" thick.

- Elongation: 7.8%
- 100% Cotton
- Thread Count: 20x26
- 500 yards/roll

¹Meets SIMRA specifications

²Meets NISO/LBI specifications



100% recycled material



Stretch across width of the roll



Stretch into the length of the roll



Square back



Rounded and backed



The mark of
responsible forestry
FSC® C011724

Look for FSC® Certified Products!



Caseliners

LBS maintains large inventories ready to be converted and shipped on-demand. We manufacture with few or no splices to allow you longer production runs.

SPINE HOLLOW 600G^{1,2}

Using Spine Hollow 600g on automated casemaking equipment allows you to eliminate messy individual spine board strips. It is both thick and sturdy, producing an extremely stable and attractive spine.

- Caliper: .0331"
- 240 yards/roll

SPINE HOLLOW 300G^{1,2}

Spine Hollow 300g, a heavy duty caseliner, runs consistently on high-speed automated casemaking equipment and holds a crisp imprint when debossed. Incredibly sturdy, it will hold a round and maintain its integrity, creating a beautifully rounded spine.

- Caliper: .0169"
- 400 yards/roll

17-PT CASELINER^{1,2}

This 100% recycled kraft caselining material is recommended for stabilizing the spine of heavy, medium, and lightweight volumes.

13-PT CASELINER^{1,2}

This 100% recycled kraft caselining material is recommended for stabilizing the spine of medium and lightweight volumes.

10-PT CASELINER¹

This 100% recycled kraft caselining material is recommended for stabilizing the spine of lightweight volumes.

PEACH FLEX™

Designed as a flexible stiffener board for bookbinding, often required in soft cover books.

- Calipers: .015, .025



LBSuper

Our LBSuper product line is 100% cotton and woven in the USA. Added stiffeners allow the materials to feed and cut with ease on your equipment.

LBSUPER RIBBED¹

Recommended for books that require SIMRA compliance.

- 100% Cotton
- Bleach-free textile manufacturing
- Thread Count: 41x17

¹Meets SIMRA specifications ²Meets NISO/LBI specifications PEACH FLEX™ is a trademark owned by Neenah.

Endsheet Reinforcing Tapes

DRILL TAPE^{1,2}

LBS' American-made Drill Tape combines tremendous strength with flexibility making it ideal for use on textbooks and children's books. It feeds and cuts easily and has excellent adhesion to the endpaper and the case when casing-in.

- Polycotton
- Thread Count: 74x50

CAMBRIC TAPE^{1,2}

This strong, pliable material is perfect for all reinforced endpapers. Our exclusive combination of stiffeners allows the tape to feed and cut easily. Also, it is double backfilled to eliminate adhesive squeeze-through.

- 100% Cotton
- Thread Count: 68x68

BLACK CAMBRIC TAPE

This strong, pliable material is perfect for all reinforced endpapers. The black color makes it the ideal complement for darker colored endsheets.

- Polycotton
- Thread Count: 74x44

THERMO KRAFT TAPE

An embossed, white kraft reinforcement paper with pre-applied adhesive that is heat activated to combine two folded sheets together, resulting in a finished combined endsheet.

Capping Material & Headband Carrier

70# NATURAL SMOOTH KRAFT¹

A capping material and a headband carrier designed to be applied after Super. Its lightly textured finish provides a superior bond with the book block and headband. The material's added stiffness ensures that your equipment will be able to feed and cut it easily.

- Bursting Strength: 49.8

70# NATURAL CREPE KRAFT

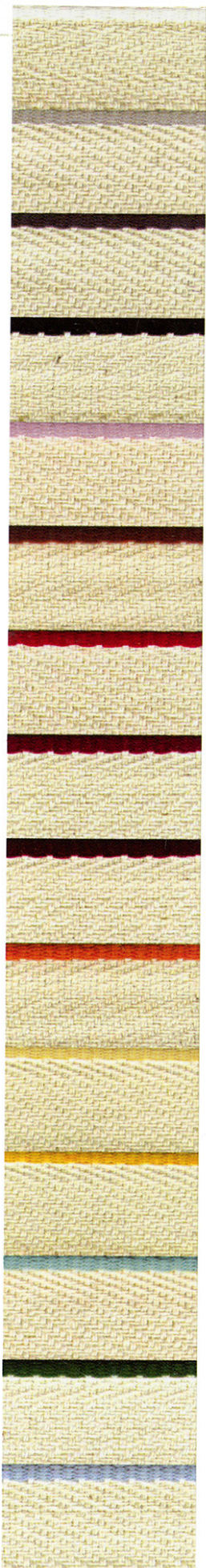
Slightly sturdier than 60# Natural Crepe Kraft with a bit more bulk for your capping material and headband carrier. Its crepe finish provides a greater surface area for the adhesive to bond to the headband and book block.

- Bursting Strength: 46.3

60# NATURAL CREPE KRAFT

An economical choice for capping material and headband carrier. Its crepe finish provides a greater surface area for the adhesive to bond to the headband and the book block.

- Bursting Strength: 36.5



White

Light Gray

Dark Gray

Black

Pink

Coral

Red

Garnet

Dark Garnet

Mango

Lemon Yellow

Gold

Mint Green

Green

Light Blue



Royal

Navy

Purple

Ecru

Tan

Brown

Black/White

Red/White

Red/Gold

Red/Navy

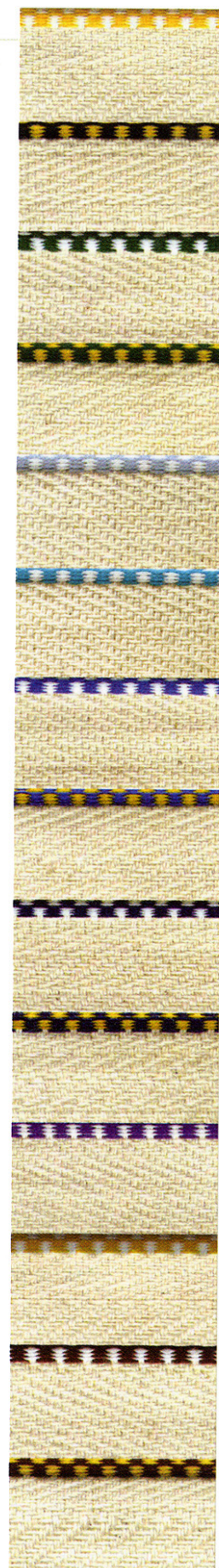
Red/Black

Red/White/Blue

Garnet/White

Garnet/Gold

Dark Garnet/Gold



Gold/White

Black/Gold

Green/White

Green/Gold

Light Blue/White

Teal/White

Royal/White

Royal/Gold

Navy/White

Navy/Gold

Purple/White

Tan/Light Gray

Brown/White

Brown/Gold

1801 Thompson Ave., Des Moines, IA 50316
P 800.247.5323
www.lbsbind.com • info@lbsbind.com